



SMD Shielded Power Inductors - SDC3D28 SERIES

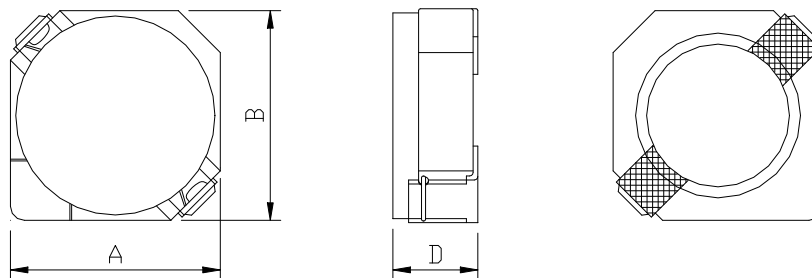


PART NUMBERING SYSTEM

SDC	3D28	—	100N	—	LF
TYPE	DIMENSIONS		INDUCTANCE		LEAD FREE

SHAPES AND DIMENSIONS

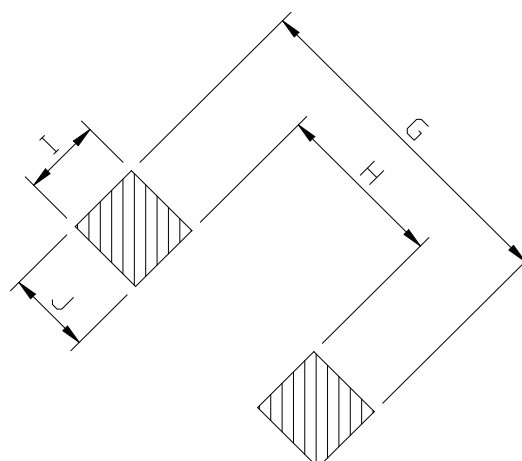
UNIT : mm



A=4.00 max. B=4.00 max. D=3.0 max.

RECOMMENDED PATTERNS

UNIT : mm



G= 5.2 H= 2.4 I = 1.5 J = 1.4

SMD Shielded Power Inductors - SDC3D28 SERIES



FEATURES

1. Compact, *low profile* shielded power inductor - only 3,0 mm high, 4.0 mm square
2. 3.3 μ H part handles 2.0 Amps of saturating current!
3. Inductance range from 3.3 μ H to 47 μ H .
4. RoHS-compliant. 260°C compatible.

SPECIFICATION TABLE

PART NUMBER	INDUCTANCE (μ H)	DCR (m Ω) (Max.)	Isat (A) (Max.)	Irms (A) (Max.)	TEST FREQ. (Freq.)
SDC3D28-3R3N-LF	3.3 \pm 30%	72.1	2.00	1.85	100KHz/1V
SDC3D28-4R7N-LF	4.7 \pm 30%	88.3	1.65	1.62	100KHz/1V
SDC3D28-6R8N-LF	6.8 \pm 30%	119	1.24	1.32	100KHz/1V
SDC3D28-100N-LF	10 \pm 30%	145	1.05	1.18	100KHz/1V
SDC3D28-150N-LF	15 \pm 30%	213	0.90	1.02	100KHz/1V
SDC3D28-220N-LF	22 \pm 30%	335	0.76	0.74	100KHz/1V
SDC3D28-330N-LF	33 \pm 30%	481	0.58	0.63	100KHz/1V
SDC3D28-470N-LF	47 \pm 30%	599	0.48	0.56	100KHz/1V

- Isat : DC current at which the inductance drops 35% (typ) from its value without current.
- Irms: The actual current when temperature of coil becomes $\Delta 40^{\circ}\text{C}$. (Ta=+25°C)
- Operating temperature range -40°C to +125°C , Electrical specifications at 25°C.
- Packing : 13" reel, machine-ready ,embossed plastic tape (2,000 parts per full reel)..